



Showroom Finish

HI-GLOSS ACRYLIC SEALER

URETHANE-FORTIFIED • CLEAR GLOSS • INTERIOR/EXTERIOR

SEAL-KRETE® Showroom Finish is a clear, urethane-fortified acrylic sealer developed to provide a high-gloss premium finish to painted, stained or bare concrete. It's durable, long-wearing, scratch-resistant, stain-resistant, oil and gas-resistant, and it extends paint life. Showroom Finish also protects against moisture damage and enhances the natural color of brick, slate, stone, exposed aggregate, saltillo, clay pavers, and stamped concrete.

Important: Read all directions thoroughly. Always wear gloves and eye protection.

SURFACE PREP: The surface should be clean and dry. You may need an oil stain remover to lift stubborn oil stains. Power washing is recommended.

Bare Concrete: Concrete must have cured for a minimum of 30 days. Etch smooth-finished concrete (such as basement or garage floors) with a concrete etching solution like SEAL-KRETE Clean-N-Etch.

Note: If etching with muratic acid the area must be neutralized before proceeding. For more information visit www.seal-krete.com.

Painted Surfaces: Freshly painted surfaces must have cured for a minimum of 72 hours. Paint must be sound (not blistering or peeling). Clean with a solution of TSP and water; rinse and allow to dry.

APPLICATION: Temperatures should be between 50°-90°F and should not fall below 50°F within 24 hours of application. Do not apply if rain is expected within 12 hours. This product is ready to use (do not dilute). Stir gently; do not shake. Apply in light, even coats. Showroom Finish goes on milky white but dries clear. One coat is recommended; however, porous surfaces like saltillo tile will require two or more coats. *Note: We recommend testing on a small area to evaluate compatibility with surface. (Product should dry to a clear, uniform finish.)*

Roller: Dampen roller, remove excess water, then saturate roller with product. Keep a wet edge while rolling. Do not allow to puddle, foam or run. (Use a 1/4" nap for smooth surfaces, 3/8" nap for rough or porous surfaces.)

Pump Sprayer: Set at a fine spray and apply using a circular motion. To eliminate puddling or to achieve a more uniform finish, backroll immediately after spraying.

COVERAGE: 150-500 sq.ft. per gallon, depending on surface porosity.

DRY TIME: Dry to touch in 1 hour (77°F, 50% RH). Recoat in 2 hours. Dry to foot traffic in 24 hours. Will accept vehicular traffic in 72 hours. Dry times should be extended in colder climates.

CLEAN-UP & STORAGE: Clean tools with soap and water immediately after use. Store in a dry area. Do not allow to freeze.

MAINTENANCE: Clean with a mild soap and water solution. Do not use solvent-based cleaners.

LIMITATIONS: Do not use on glazed tile. Do not use over two-part epoxy paints. Do not use in areas subject to hydrostatic pressure. Smooth-finished concrete may be slippery when wet; consider using an anti-skid additive like SEAL-KRETE Clear Grip™ on high foot traffic areas.

CAUTION: KEEP OUT OF REACH OF CHILDREN.

FIRST AID: Eye Contact: Flush with water for 15 minutes. **Skin Contact:** Prolonged contact may cause irritation. Wash affected area with soap and water. **If Swallowed:** Induce vomiting and seek immediate medical attention. **Inhalation:** If headache or nausea is experienced, remove the individual to fresh air. If symptoms persist, seek medical attention.

WARRANTY: Manufacturer/seller makes no warranty of any kind except that this product is free from defect and is of merchantable quality. Buyer remedy for breach of warranty is limited to replacement of product or refund of purchase price.

TECHNICAL SUPPORT: For more information on surface prep or application guidelines, or to obtain a Material Safety Data Sheet, call 1-800-323-7357, M-F (8:00 am – 5:00 pm EST) or visit our website at www.seal-krete.com.

**Sanding or removing paint containing lead may be hazardous. For information contact the National Lead Information Center at 1-800-424-LEAD or www.epa.gov/lead.*



PRODUCT NUMBER	UNIT SIZE	UPC CODE	CARTON QTY	CARTON CODE	CARTON SIZE (L X W X H)	CARTON SIZE (CUBIC FEET/LBS)	CARTON QTY.	PALLET QTY. (CARTONS)
605001	1 GALLON	0 15944 60501 3	4	900 15944 60501 0	14 x 14 x 8	.91 / 9.75	4	45 cases
605005	5 GALLONS	0 15944 60505 1	1	---	---	---	---	36 units



ADDS A CLEAR PROTECTIVE FINISH TO BARE OR PAINTED CONCRETE, UNGLAZED TILE, SALTILLO, SLATE, STONE AND MORE

TECHNICAL INFORMATION

- ASTM D-1475: pounds/gallon 8.51 ± .15
- Viscosity: 35 seconds, #4 cup
- ASTM E-70: pH 9-9.5
- ASTM D-3960: VOC less than 100 grams/liter
- ASTM D-2369-93: solids 30 ± 1%
- Clean-up: soap and water
- Shelf life: 2 years min. (closed container)
- Visual appearance: milky white (wet); glossy (dry)
- ASTM D-1640: dry-to-touch 1-2 hours; dry to recoat 2-3 hours; dry to light foot traffic 24 hours; dry to vehicular traffic 72 hours
- ASTM D-3363 hardness: pencil F
- ASTM D-3359B intercoat adhesion: excellent
- Gloss: 60
- ASTM G-53 ultraviolet resistance: excellent
- Gloss retention: excellent
- Cleanability (occasional): excellent
- Tire marking: resistant to most tires

CHEMICAL / SOLVENT RESISTANCE

- ASTM D-1308
- Water: resistant
- Gasoline: no effect, remove immediately
- Oil: no effect, resistant
- Mineral spirits: no effect, resistant
- Formula 409: spot cleaning, remove immediately
- Salt: resistant
- Chlorine: resistant

LIQUID PROPERTIES

Solids: 30%
 Urethane-Acrylic Blend: Proprietary
 Water Based
 Odor: Low
 Appearance: Milky White, Dries Clear
 VOC: Less than 100 grams per liter

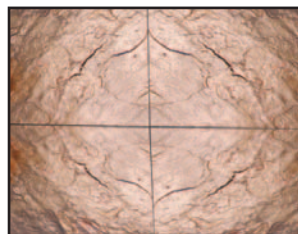
COVERAGE GUIDELINES

	Material Coverage Approx. sq.ft./gal.
Previously Painted Concrete	400-800
Smooth Concrete	400
Stone	300
Brick and Clay Pavers	250
Slate	250
Stamped Concrete	200
Broom-Finished Concrete	200
Saltillo Tile	150

Note: Actual coverage will vary depending on porosity of surface.



Urethane-Fortified • Clear Gloss • Interior/Exterior



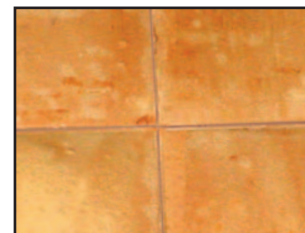
SLATE



STONE or CLAY PAVERS



CONCRETE



SALTILLO

